

## ROLLER SHUTTER flush mounted



**aliplast**  
aluminium systems

[www.aliplast.pl](http://www.aliplast.pl)



Flush mounted roller shutters systems are mainly designed for new buildings. This systems brings excellent thermal insulation performance as they do not require any modifications to the existing windows, doors or lintels, and thus do not affect the building's energy use. What's more, they perfectly fit the building's facade.

### 3 SIZES

the box width and height  
137, 165, 180 mm

### ALUMINIUM

The shutter roller is made of aluminum. This ensures structural stability and high product quality. The construction of the roller shutters is made of extruded aluminium that ensures its durability and resistance to abrasion and weathering.

characteristic

installation possibilities

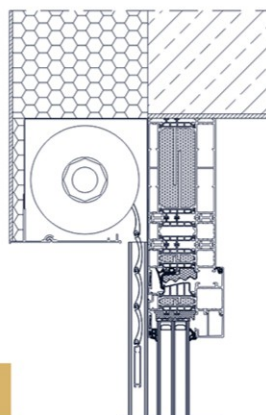
## control

### manual or automatic

**manual:** with a belt, a crank, or a belt with crank gearing

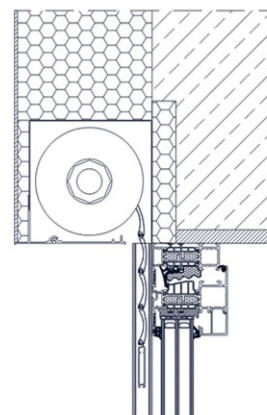
**automatic:** by a remote, a key or switch controls

*possibility of intelligent roller shutters control*



a

installation on the extension



b

installation on the lintel



## QUADRO

Adaptation roller shutters is intended for use in existing buildings. The advantage of these products is that they do not require any special pre-installation preparation nor works to the existing structure as they are not integrated with the window. The construction of the systems is made of extruded aluminium that ensures its durability and resistance to abrasion and weathering.

### QUADRO

this option is characterized by the special cut-off box that removes the right angle

### 3 SIZES

the box width and height  
137, 165, 180 mm

### ALUMINIUM

The shutter roller is made of aluminum. This ensures structural stability and high product quality. The construction of the roller shutters is made of extruded aluminium that ensures its durability and resistance to abrasion and weathering.

characteristic

installation possibilities

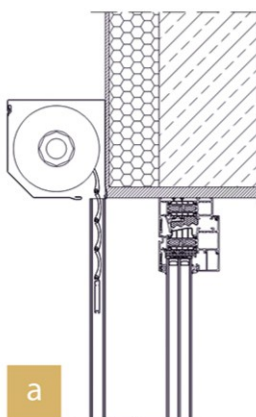
## control

### manual or automatic

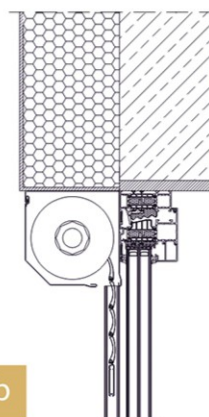
**manual:** with a belt, a crank, or a belt with crank gearing

**automatic:** by a remote, a key or switch controls

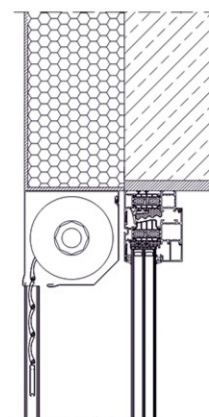
*possibility of intelligent roller shutters control*



**a**  
wall mounting



**b**  
installation in a niche



**c**  
installation in a recess with inverted box  
(curtain rolled inwards)





## ROUND

Adaptation roller shutters is intended for use in existing buildings. The advantage of these products is that they do not require any special pre-installation preparation nor works to the existing structure as they are not integrated with the window. The construction of the systems is made of extruded aluminium that ensures its durability and resistance to abrasion and weathering.

### ROUNDED

this option is characterized by the oval shape

### 3 SIZES

the box width and height  
137, 165, 180 mm

### ALUMINIUM

The shutter roller is made of aluminum. This ensures structural stability and high product quality. The construction of the roller shutters is made of extruded aluminium that ensures its durability and resistance to abrasion and weathering.

## characteristic

## installation possibilities

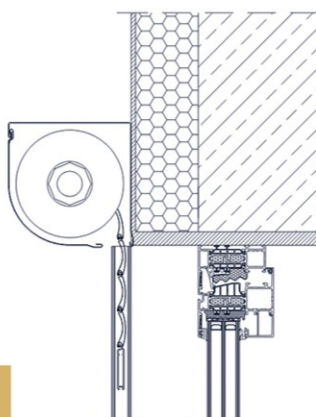
## control

### manual or automatic

**manual:** with a belt, a crank, or a belt with crank gearing

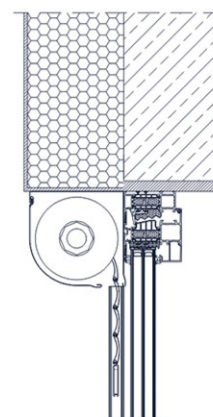
**automatic:** by a remote, a key or switch controls

*possibility of intelligent roller shutters control*



a

wall mounting



b

installation in a niche

## CURTAIN AND PROFILES colours range



**7016MT**  
Aliplast code

anthracite



**7024MI**  
Aliplast code

graphite gray



**8019M**  
Aliplast code

brown



**SP7162**  
Aliplast code

structure



**9005MI**  
Aliplast code

black



**9016M**  
Aliplast code

white



**7035MI**  
Aliplast code

light grey



**9006M**  
Aliplast code

silver



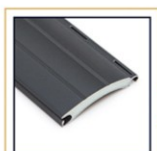
**WDZ001**  
Aliplast code

golden walnut



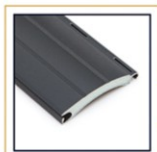
**WDPM01**  
Aliplast code

burnt mahogany



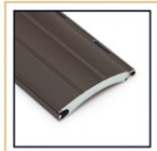
**RL020HD**  
Aliplast code

anthracite



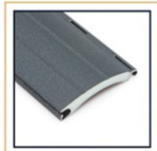
**RL021HD**  
Aliplast code

graphite gray



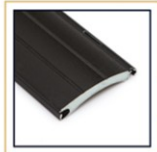
**RL024HD**  
Aliplast code

brown



**RL023HD**  
Aliplast code

structure



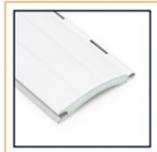
**RL025HD**  
Aliplast code

black



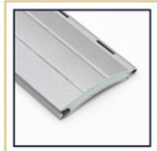
**RL027HD**  
Aliplast code

white



**RL022HD**  
Aliplast code

light grey



**RL026HD**  
Aliplast code

silver



**RL028HD**  
Aliplast code

golden oak



**RL029HD**  
Aliplast code

wenge

**aliplast**  
aluminium systems

A huge palette of colours and design possibilities allows you to match all elements of the frames to your own taste, also the colours blind and shutters.



The construction of the roller shutters is made of extruded aluminium that ensures its durability and resistance to abrasion and weathering.



[www.aliplast.pl](http://www.aliplast.pl)

\*The colors do not faithfully reproduce the real colors.